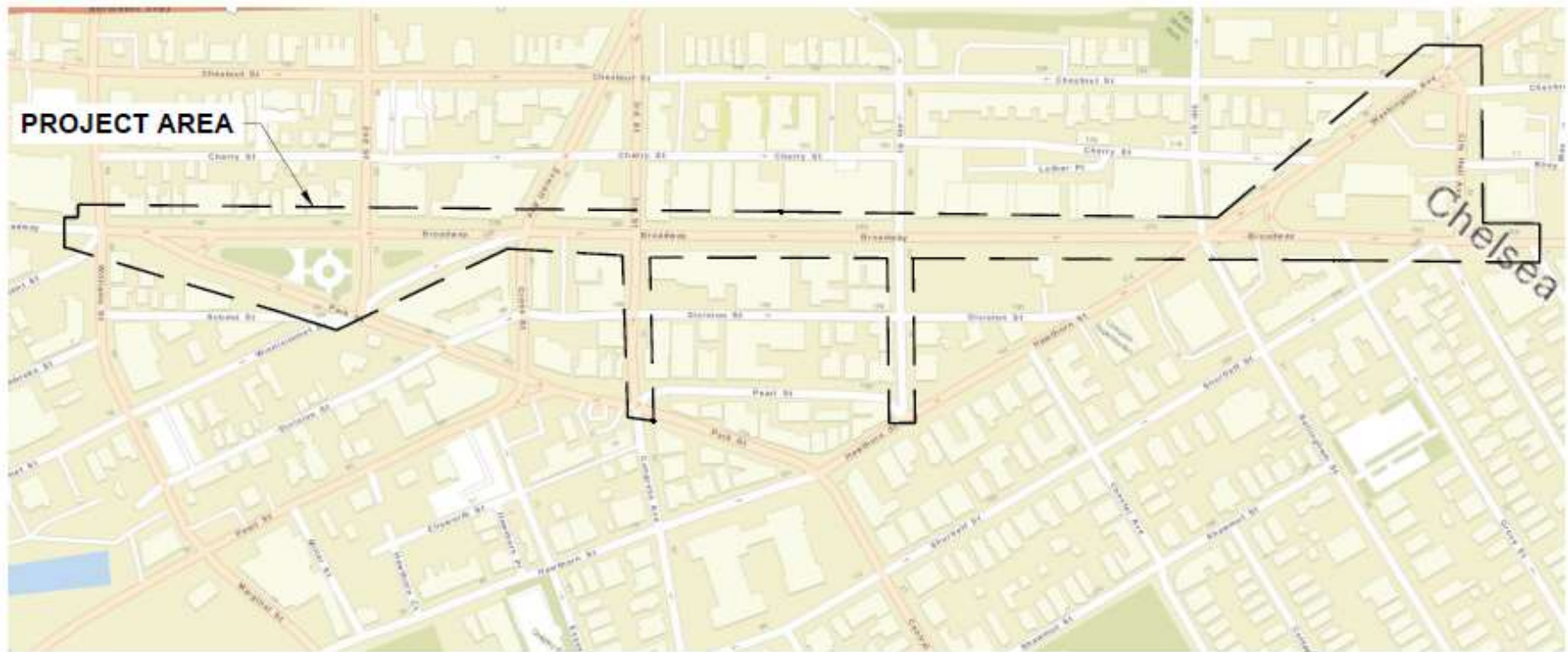





Downtown Broadway Utility Improvement

City of Chelsea – City Council Subcommittee – 30 January 2024



Utility Reconstruction Goals


- Prevent flooding
 - Reduce likelihood of combined sewer overflow
 - Minimize sewer backups in a high-demand area
 - Ensure clean drinking water supply for all businesses and residents
 - Remove lead water services
- 

Work Summary



- Upgrade Water Main
- New Gravity Sewer
- New Gravity Drain

Schedule

- Design Complete
 - Construction bids due mid February 2024
 - Break ground May 2024
 - Target project completion late 2025
- 



Chelsea Downtown Broadway Project

City Council Subcommittee Meeting

Chelsea City Hall, Room 305, Chelsea, MA
Tuesday, January 30th, 2024, at 6:00PM EST
Project File No. 609532



Project Team

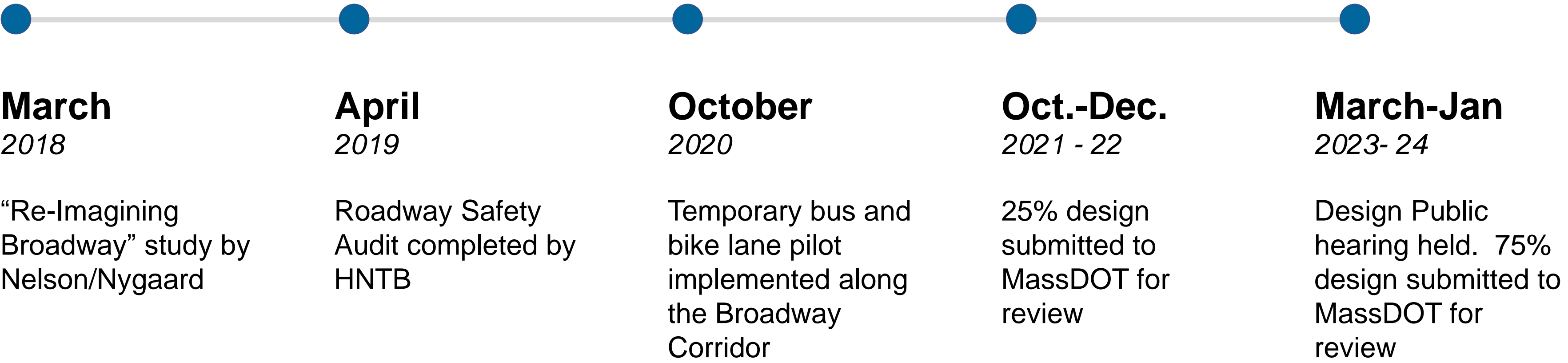
- **MassDOT**
 - Lawrence Cash, Project Manager
 - Joe Doucette, District 6
- **City of Chelsea**
 - Cate Fox-Lent, DPW Commissioner
- **HNTB**
 - Jonathan Kapust, Project Manager
 - Alex Siu, Traffic Lead

Agenda

- Project history
- Preferred Alternative
- Construction approach
- Questions and answers

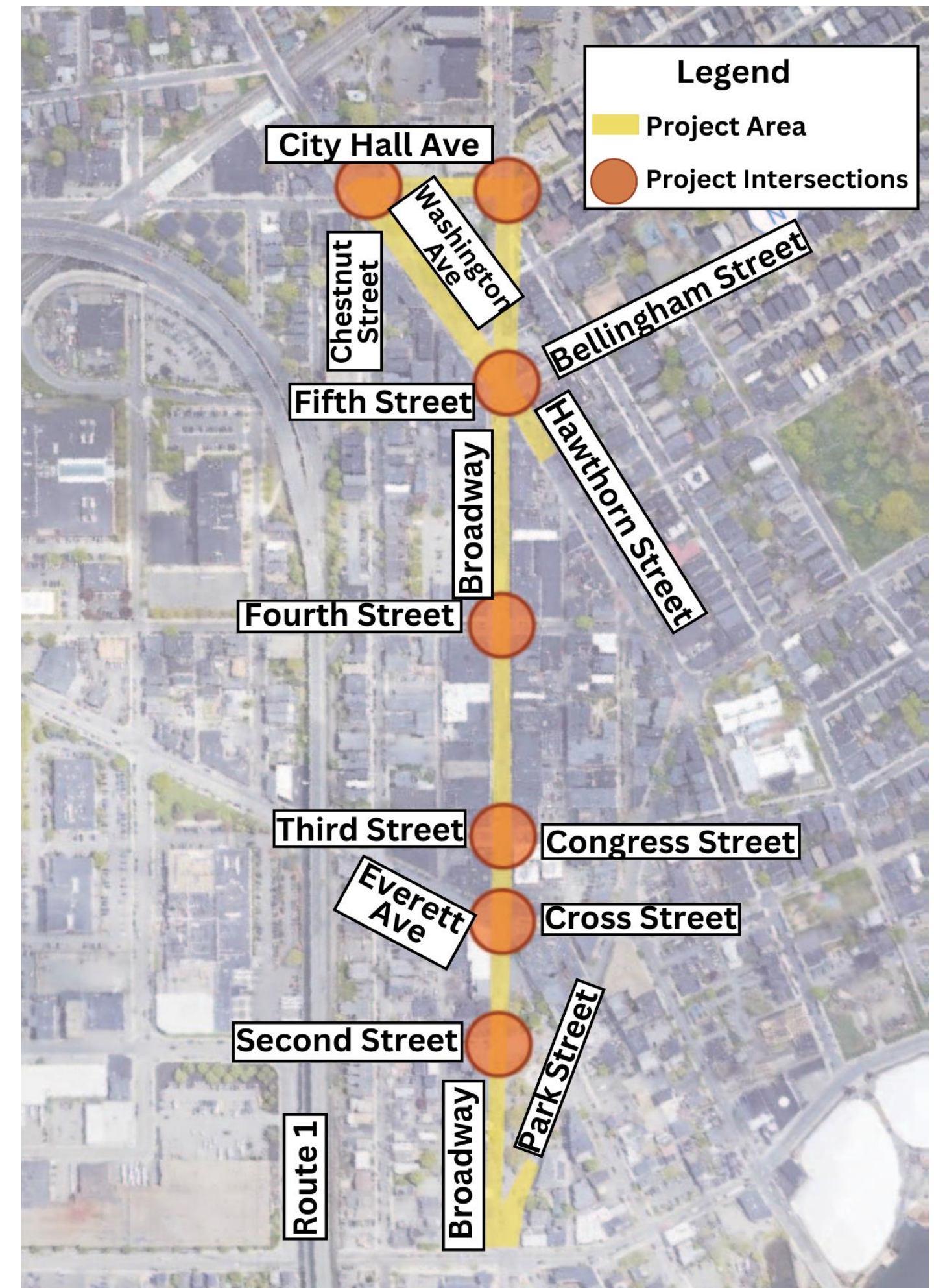


Project History



Project Area

- ½ Mile Broadway Corridor –
From Williams Street to City Hall Avenue
- 7 Intersection Improvements
 - Second Street
 - Everett Ave/Cross Street
 - Third Street/Congress Avenue
 - Fourth Street
 - Washington Ave/Bellingham and Fifth Street
 - Washington Ave at City Hall Ave
 - City Hall Ave/Marlborough Street
- Project Cost: \$7.7 million
 - Does not include ROW
 - Does not include City hall plaza cost

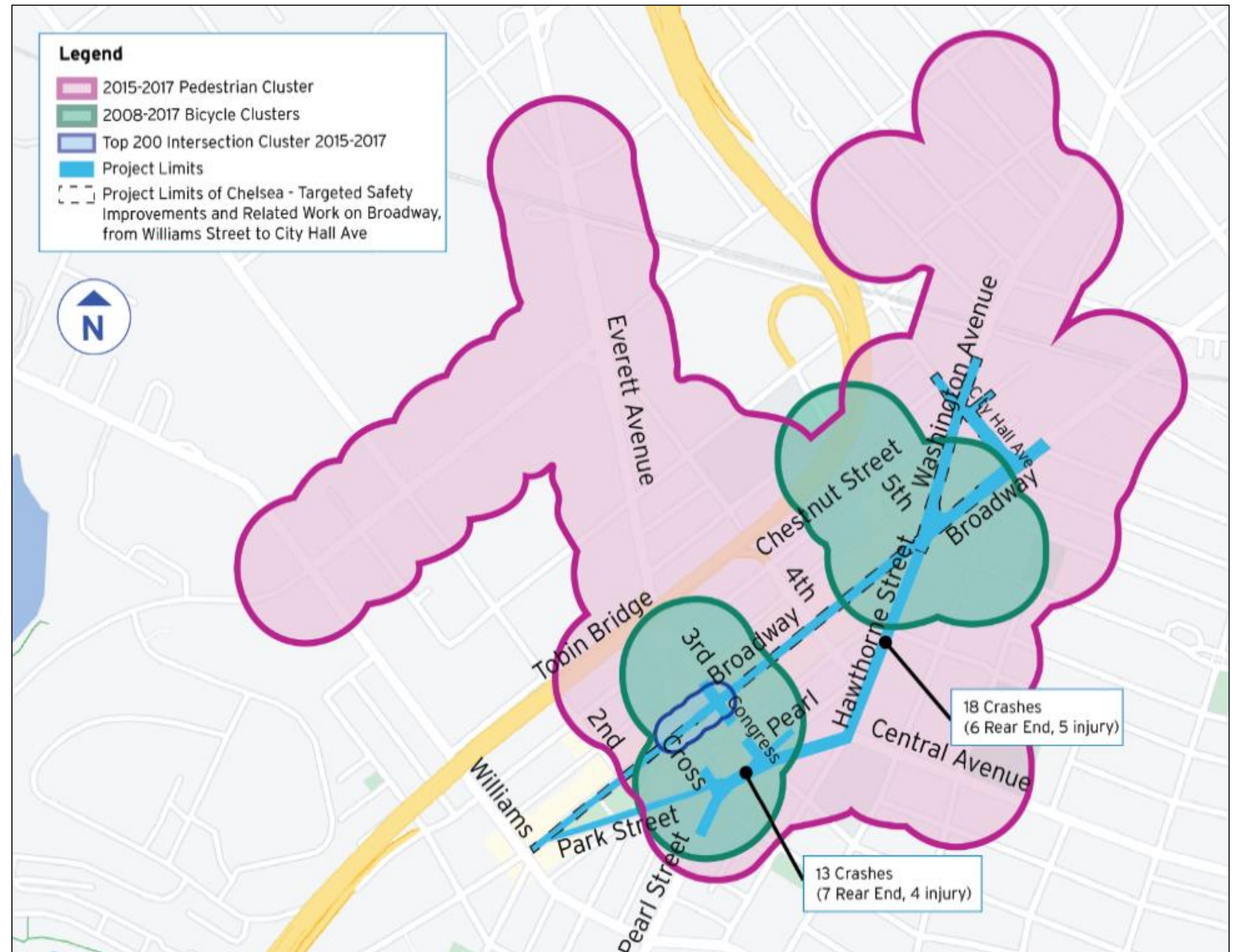




**Why was this
project
initiated?**

High Crashes

- The project area has some of the state's most dangerous vehicle, bicycle, and pedestrian crash clusters. (Via: Highway Safety Improvement Program, or HSIP).
- HSIP clusters are areas in the state of Massachusetts with high numbers of crashes.
- Over 2,800 people walk through the intersections every day.
- 2019 Road Safety Audit identified large amount of rear end and angle crashes at intersections and double-parked vehicles.



Transit

- Five MBTA bus routes have stops on Hawthorn Street at Bellingham Square
- Three of these routes (111, 116 and 117) carry over 24,000 riders per day.
- Buses often stop away from curbline.
- Sidewalks are blocked by transit users waiting to board





**What do we
want to
accomplish?**

Targeted Safety Improvements

- Project goal is to improve roadway safety for all road users:
 - Shorter crosswalks for pedestrians at intersections
 - Accessibility improvements at intersections and sidewalk
 - Larger bus stops
 - Bicycle connections to/from Chelsea Greenway
 - Simplified, safer roadway network at City Hall
- Advances key goals of the 2018 City of Chelsea Re-imagining Broadway Plan



80% of Chelsea's workforce are considered "essential employees"



59% of people who live in Chelsea drive to work



29% of people who live in Chelsea take public transportation to work

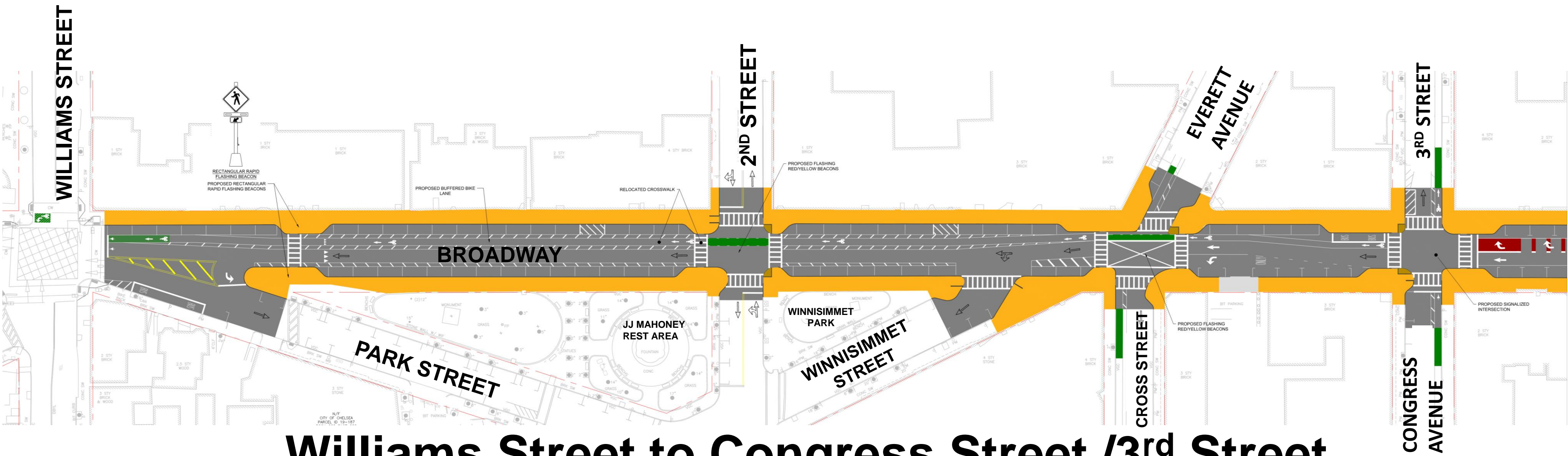


30% of households in Chelsea do not own cars



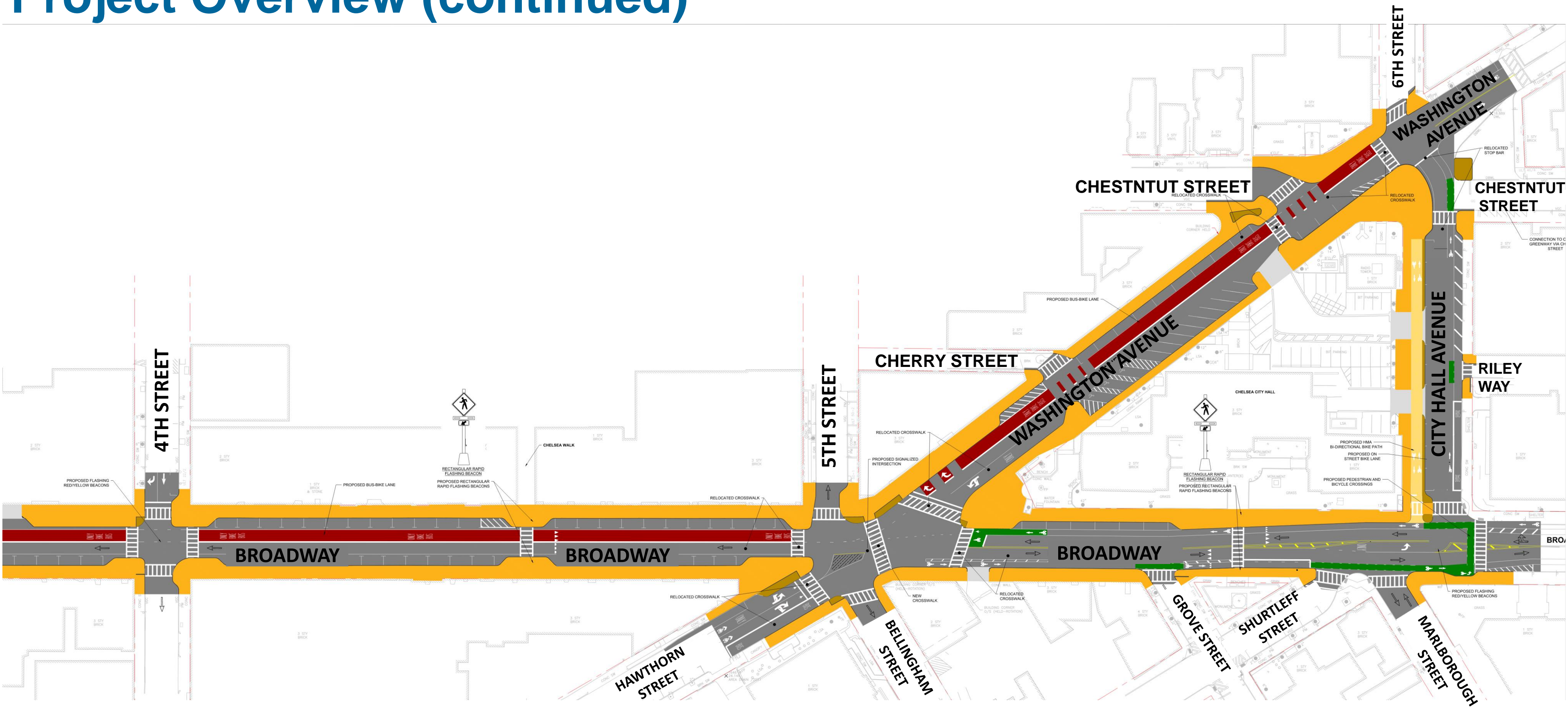
How has our
design
progressed?

Project Overview



Williams Street to Congress Street /3rd Street

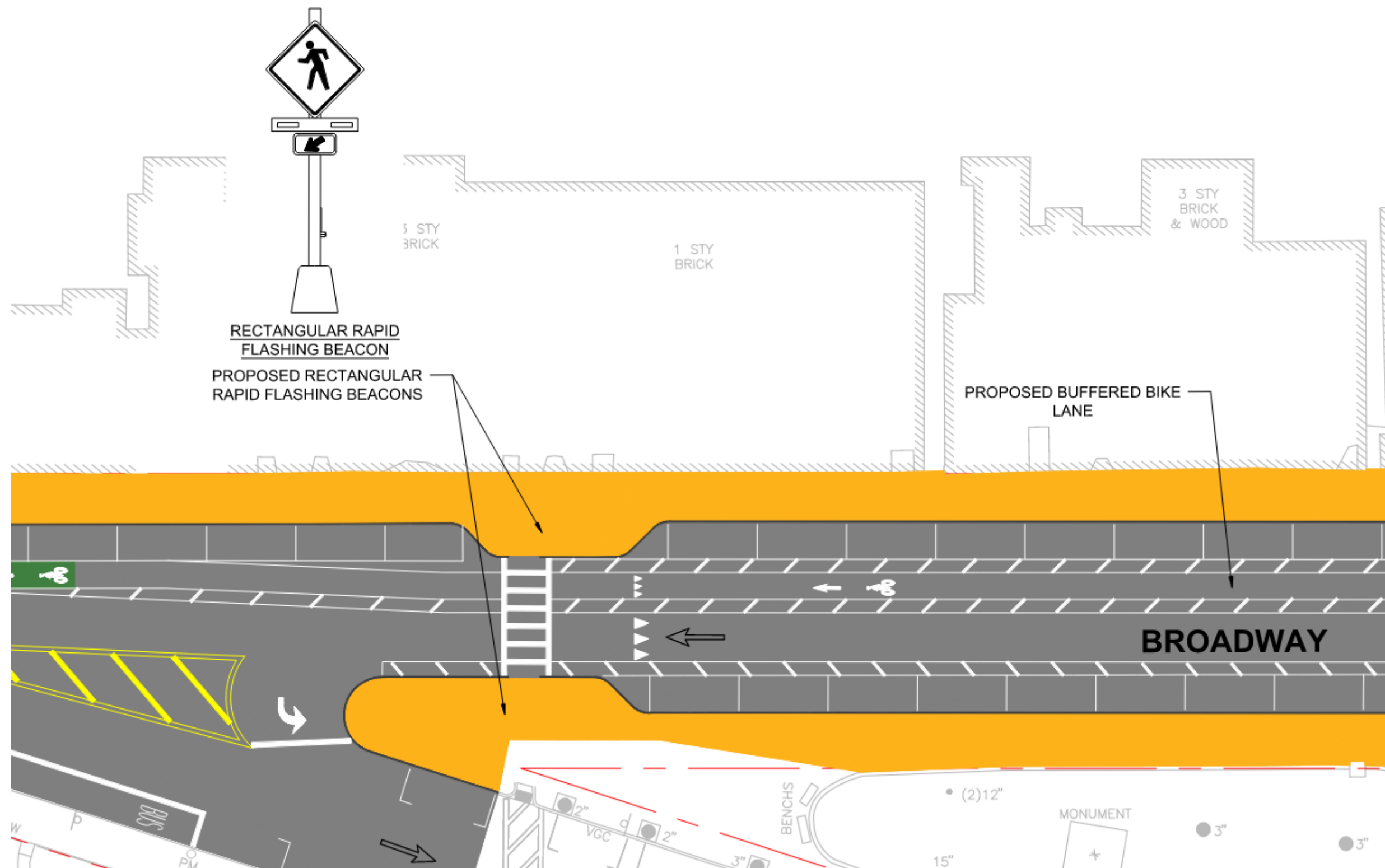
Project Overview (continued)



4th Street to City Hall Ave

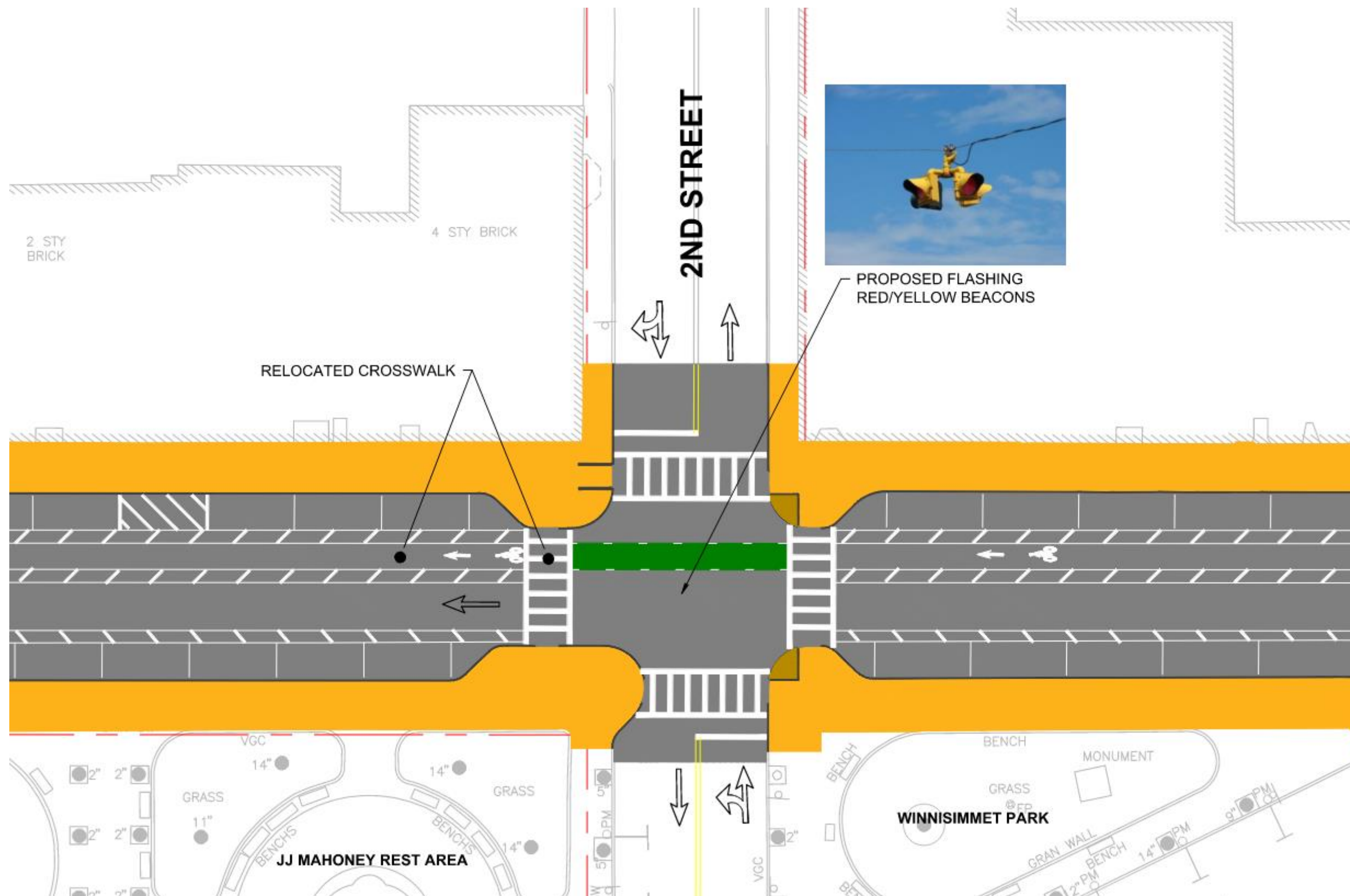
Install flashing pedestrian beacons & buffered bike lane

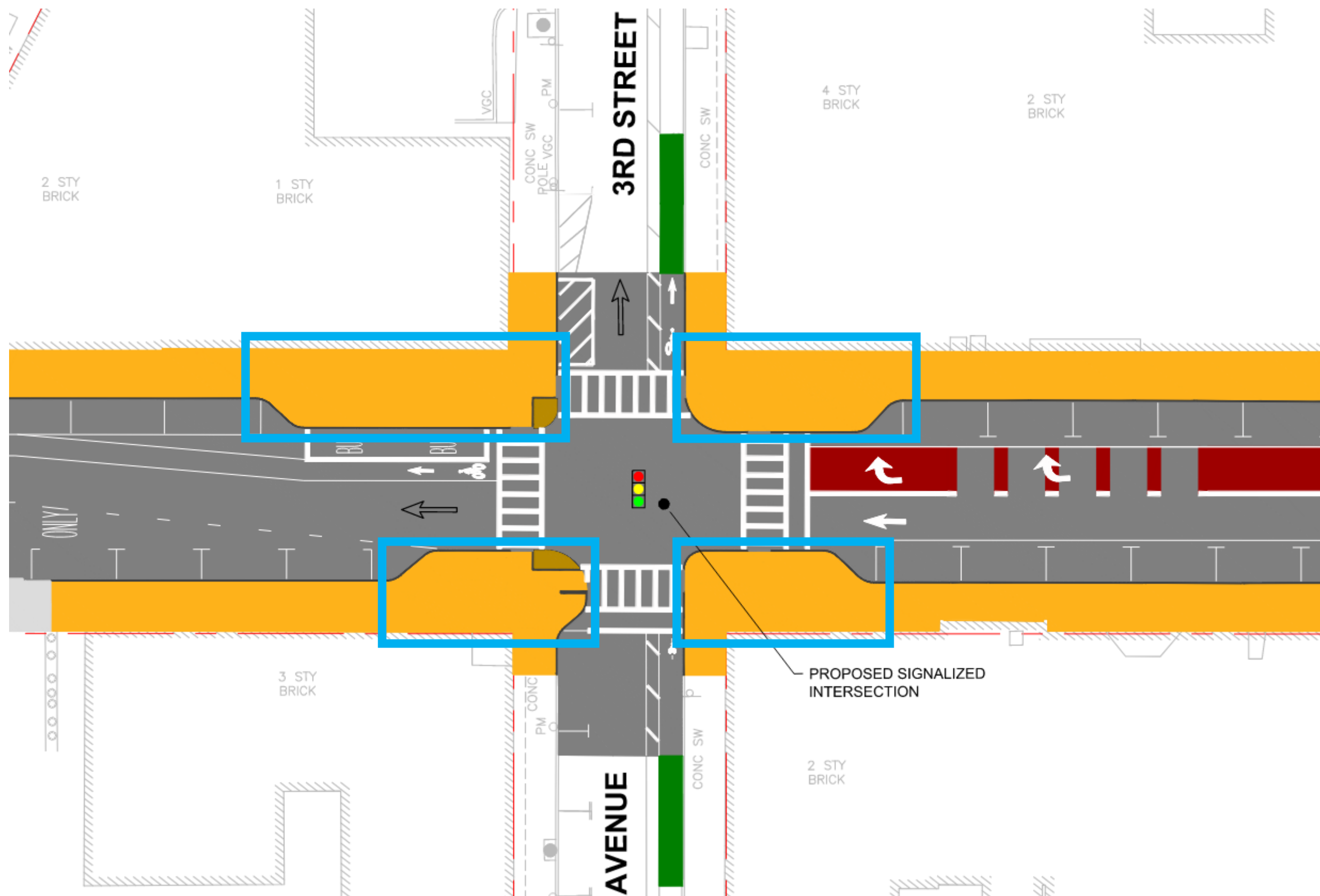
- Increase safety and visibility for those walking across the street
- Buffered bike lane on Broadway increases rider safety



Install overhead flashing beacons at intersections with no traffic signal

- Flashing beacons are proposed in addition to stop signs to provide additional visual warning to drivers



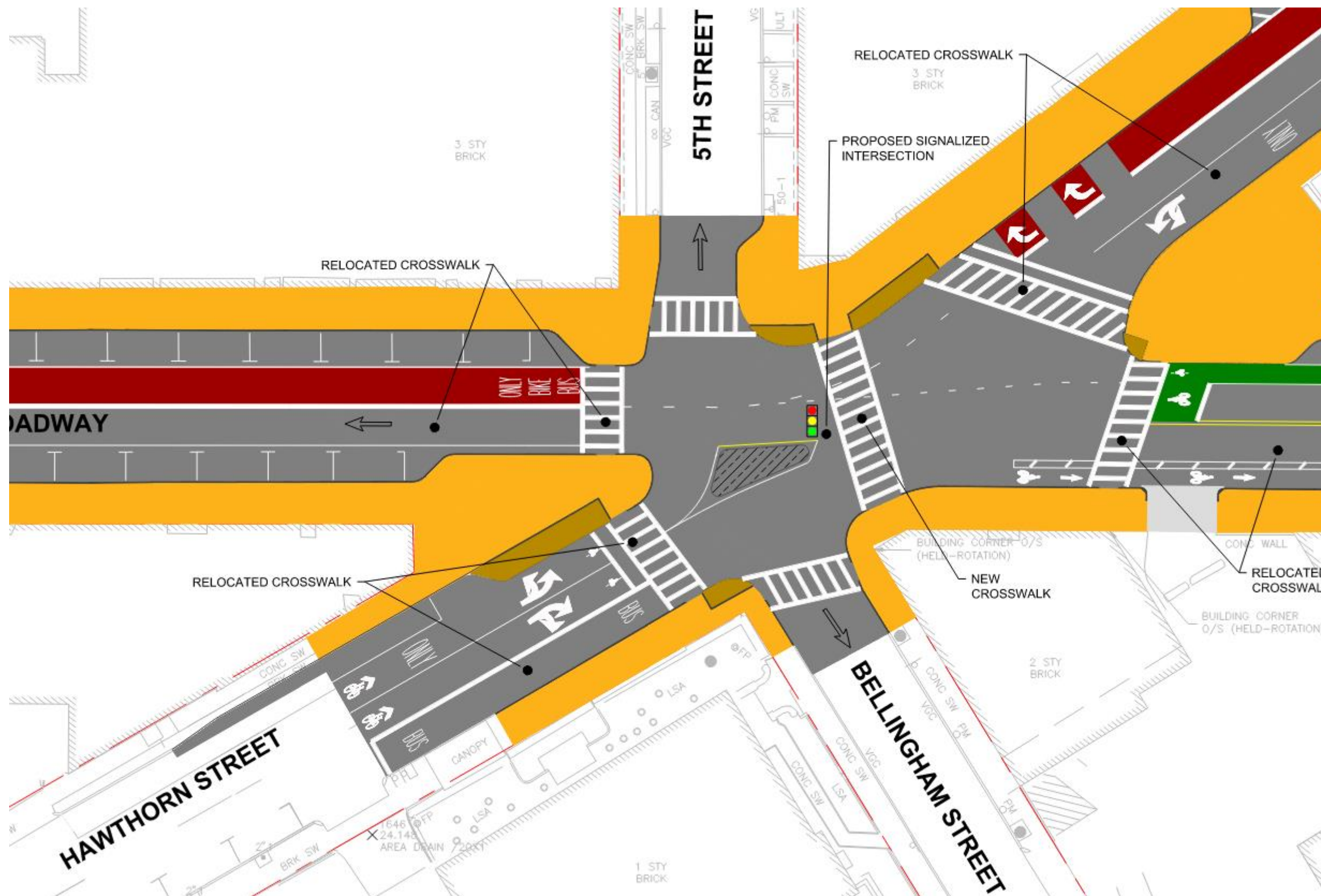


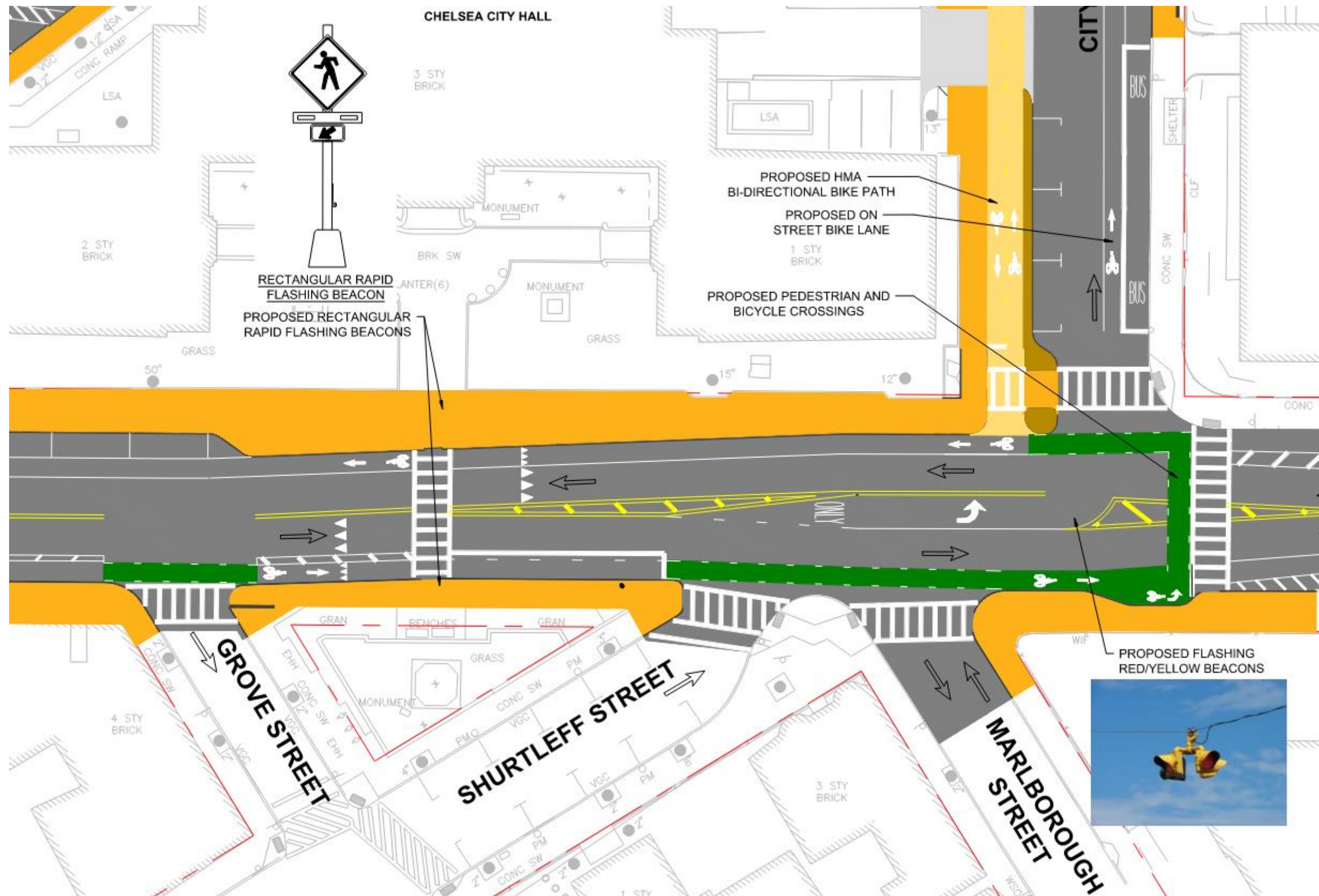
Widen sidewalks at intersections

- Make crossing distances shorter and make pedestrians more visible to drivers
- Crosswalks are relocated closer to the intersection to make pedestrians more visible to drivers

Redesigned Bellingham Square

- Allow left turns from Washington, Broadway and Hawthorn Street
- Signal control for all movements
- Additional crosswalks including mid intersection



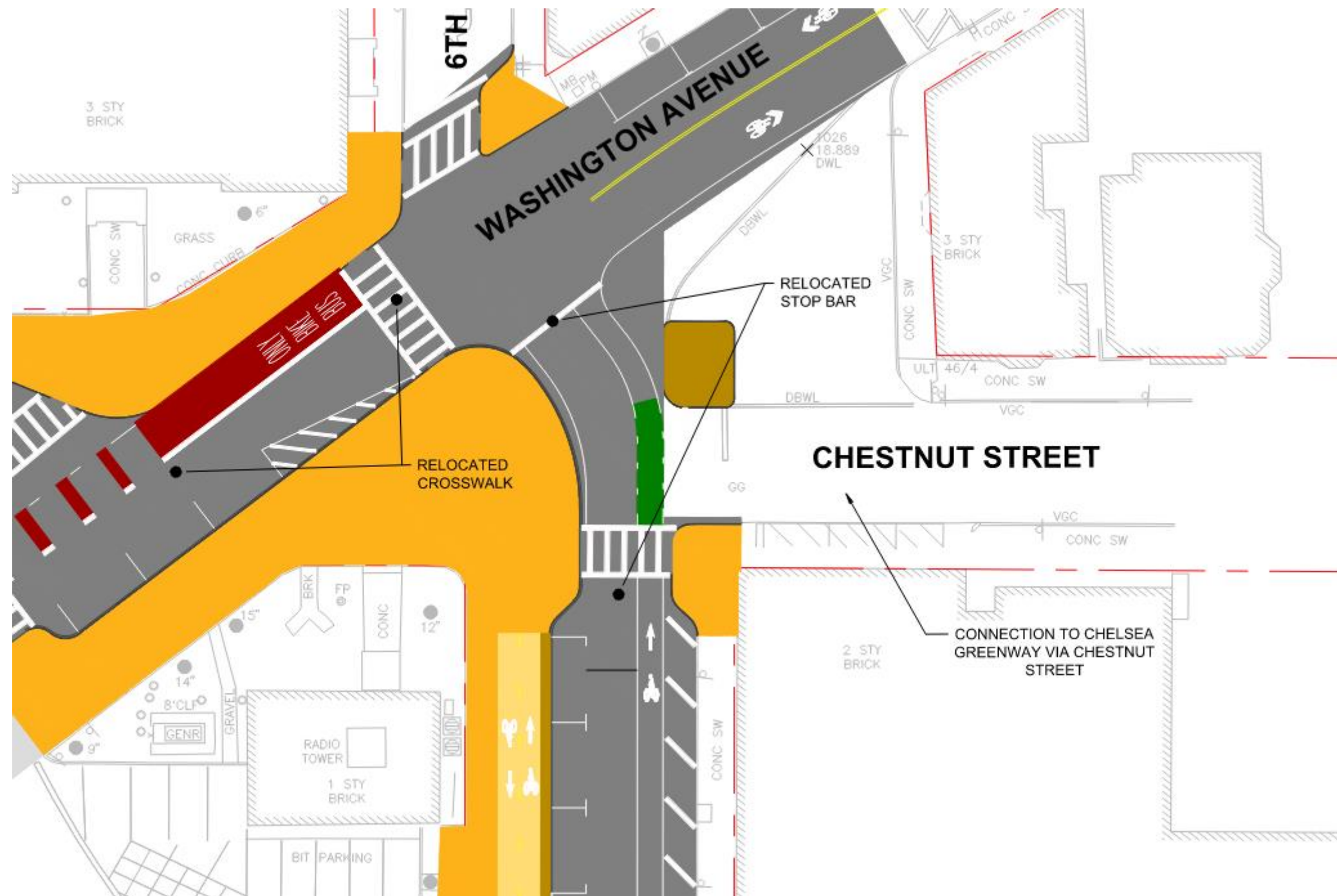


Two-way traffic on Broadway & bike improvements

- Make Broadway (in front of City Hall) two-way
- Bi-directional bike path is proposed along City Hall Avenue
- Makes connections to the Chelsea Greenway

Fay Square improvements

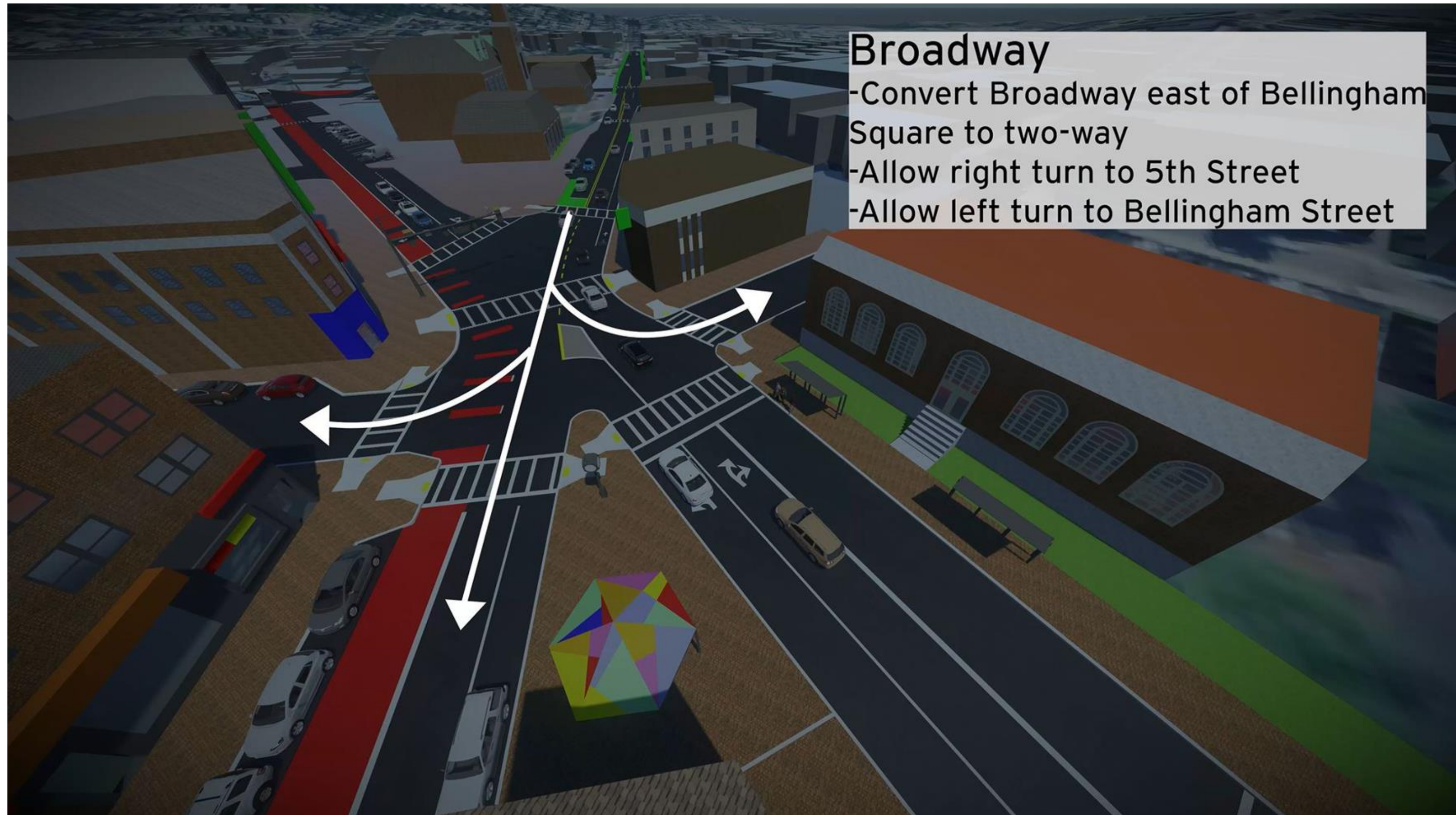
- Reduce size of paved area, shorten crosswalks, and define travel lanes for vehicles
- Fire station operations not affected.
- Makes connections to the Chelsea Greenway



Bellingham Square



Bellingham Square



Bellingham Square



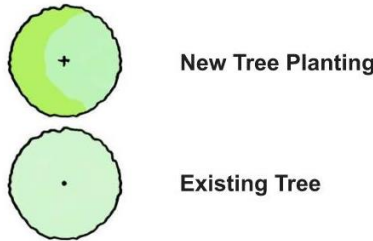
Bellingham Square



Hawthorn Street
-Allow U-turn to Broadway
-Allow left turn to 5th Street

Landscape Design at City Hall Plaza

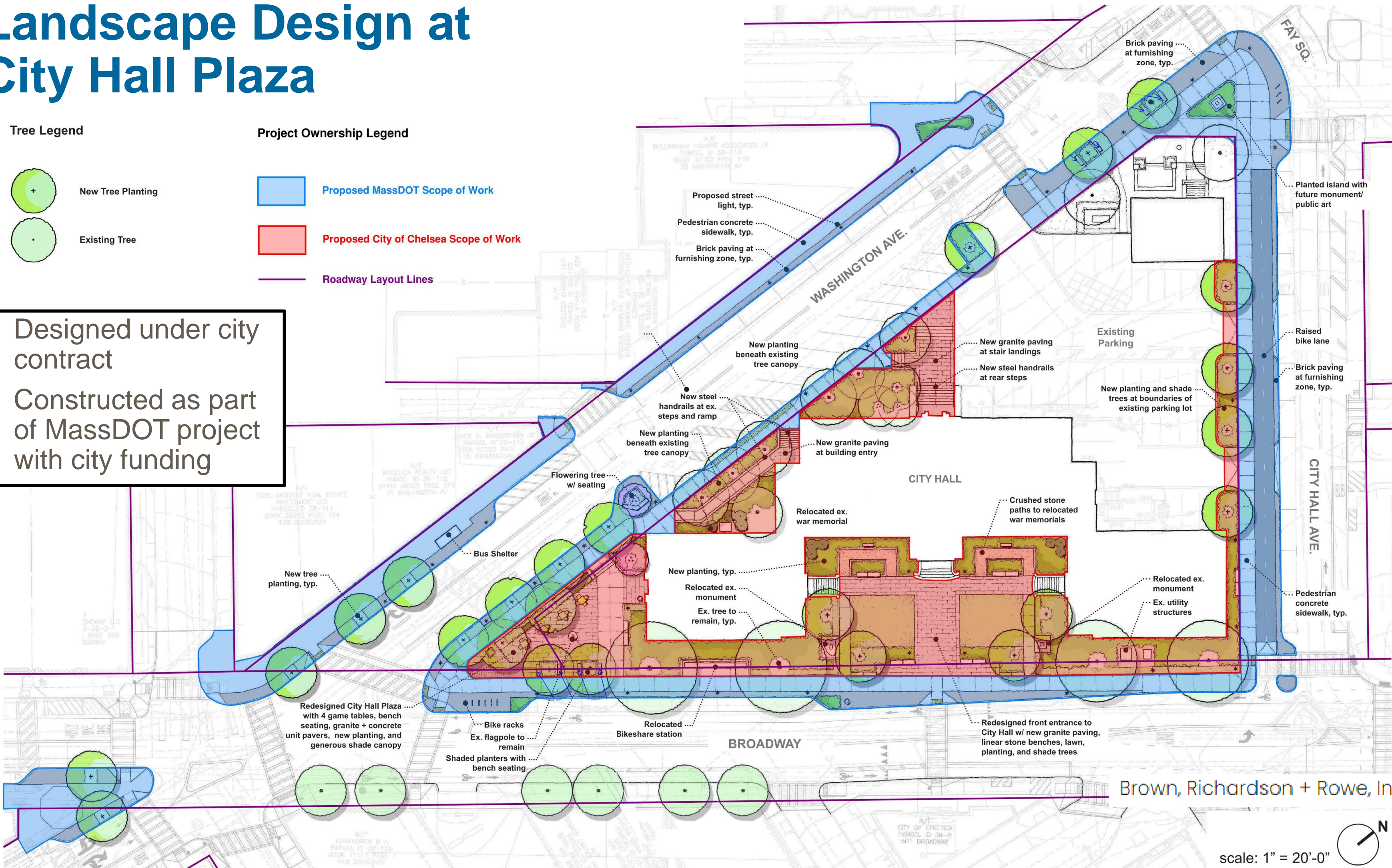
Tree Legend



Project Ownership Legend

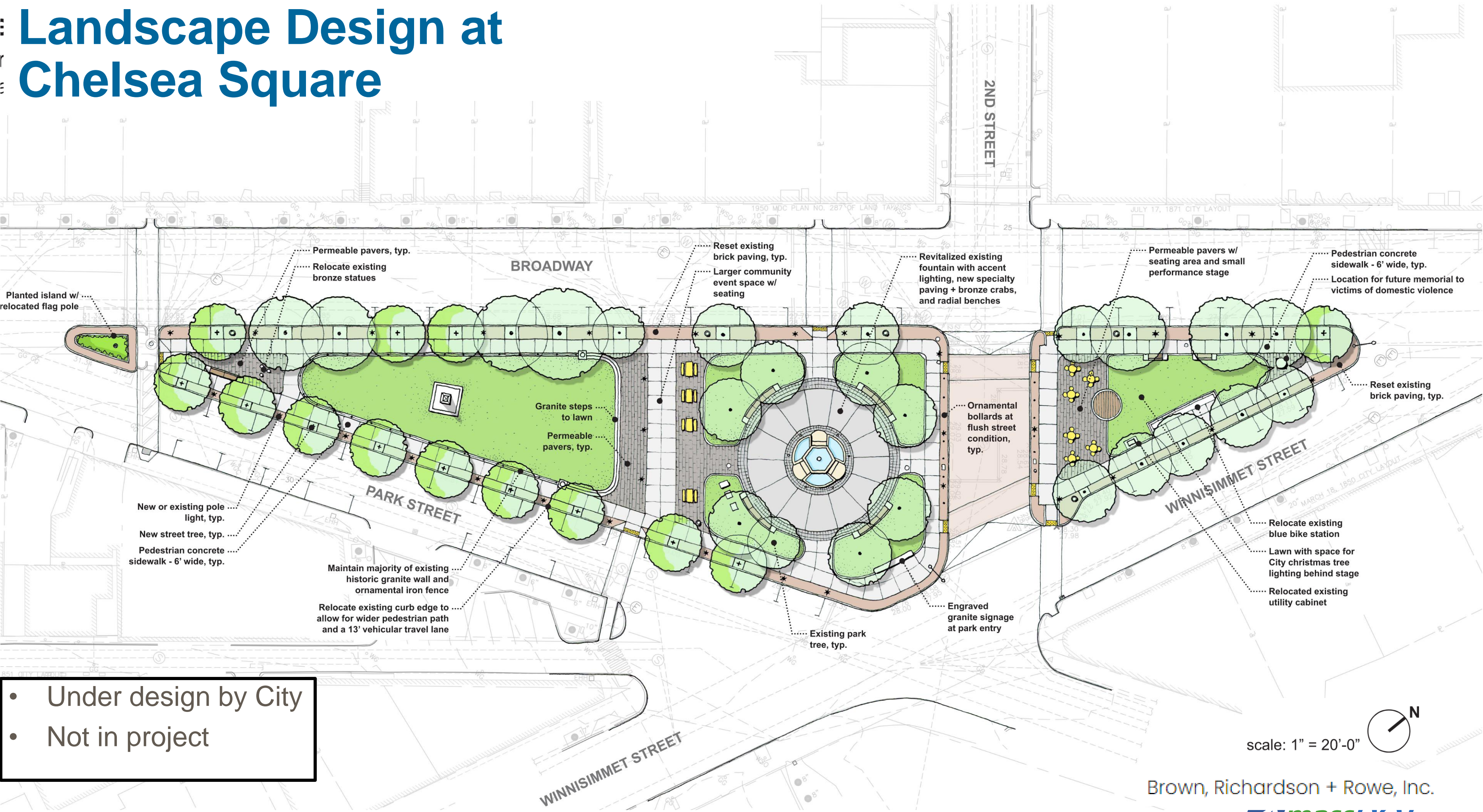


- Designed under city contract
- Constructed as part of MassDOT project with city funding



Brown, Richardson + Rowe, Inc.

Landscape Design at Chelsea Square



- Under design by City
- Not in project

scale: 1" = 20'-0"

Brown, Richardson + Rowe, Inc.





**What is the
construction
approach?**

Construction Approach

- Lane closures will follow Massachusetts Department of Transportation (MassDOT) standard details
- Temporary pedestrian facilities will be provided during all stages of construction
 - Access will be maintained to all abutters
- Bellingham Square constructed in stages and all other intersections will be constructed individually
 - Parking impacts will be minimized at mostly located at intersections or where the curbline is adjusted.
- **Contractors will not be able to park equipment or stage in parking not under construction**

Next Steps

- Final Design – Finishing in fall 2024
- Secure the ROW – Summer 2024
- Project Advertise – Spring 2025
- Construction – begins following completion of contract for sewer separation phase 1
 - March 2024 - December 2025
- Continued public outreach
 - Pop-up events
 - Stakeholder coordination and engagement
 - Continue to solicit public feedback and comment

Communications

For General Information, Visit the Project Website:

<http://tiny.cc/ChelseaBroadway>



To Leave a Comment Online, Visit:

<http://tiny.cc/ChelseaComments>

To Submit a Comment by Mail, Write to:

Carrie E. Lavallee, P.E., Chief Engineer
Suite 7550, 10 Park Plaza, Boston, MA 02116,
Attention: Project Management, Project File No. 609532

or Email:

MassDOTProjectManagement@dot.state.ma.us